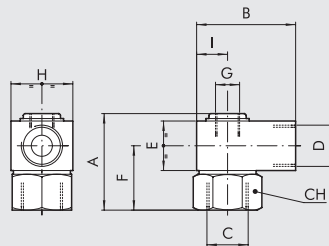


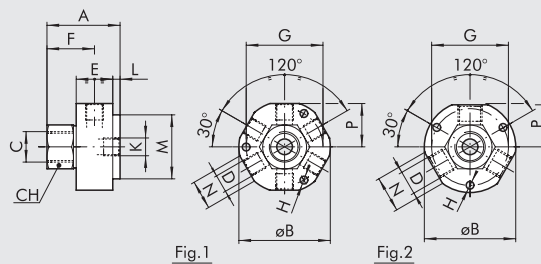
GIUNTI ROTANTI

GIUNTO ROTANTE SINGOLO



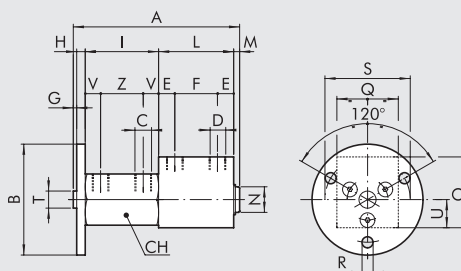
Codice	A	B	C	D	E	F	G	H	I	CH	giri/min
W0511101101	32.5	30	G 1/8	G 1/8	16	22	-	16	8	16	550
W0511121121	32.5	30	G 1/4	G 1/4	16	22	-	16	8	16	550
W0511131131	44	40	G 3/8	G 3/8	25	28.5	G 1/8	25	12.5	22	300
W0511141141	55	65	G 1/2	G 1/2	30	35	G 3/8	40	20	30	200
W0511151151	70	65	G 3/4	G 3/4	40	45	G 1/2	40	20	36	160
W0511161161	80	80	G 1	G 1	45	52.5	G 3/4	50	26	45	140

GIUNTO ROTANTE AD USCITE MULTIPLE



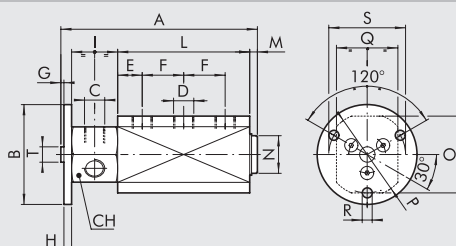
Codice	Figura	ENTRATE		USCITE		E	F	G	H	K	L	M	N	P	CH	giri/min		
		A	B	N°	C												N°	D
W0513131101	1	40	50	1	G 3/8	6	G 1/8	20	26	42	4.2	G 1/8	4	35	16	23.7	22	300
W0512131121	2	40	50	1	G 3/8	3	G 1/4	20	26	42	4.2	G 1/4	4	35	19	23	22	300

GIUNTI ROTANTI A 2 VIE INDIPENDENTI



Codice	A	B	ENTRATE		USCITE		E	F	G	H	I	L	M	N	O	Q	R	S	T	U	V	Z	CH	giri/min
			N°	C	N°	D																		
W0514101101	97.5	64	2	G 1/8	2	G 1/8	12	20	2	5	43	44	3.5	15	40	25	6.3	50	10	20	11.5	20	30	300
W0514121121	132	64	2	G 1/4	2	G 1/4	15	30	2	5	60	60	5	24.5	50	40	6.3	50	10	25	15	30	36	200

GIUNTI ROTANTI A 3 VIE INDIPENDENTI



Codice	A	B	ENTRATE		USCITE		E	F	G	H	I	L	M	N	O	P	Q	R	S	T	CH	giri/min
			N°	C	N°	D																
W0515121121	128	64	3	G 1/4	3	G 1/4	16	27	2	5	30	86	5	24.5	50	54	40	6.3	50	10	36	200